

# FACE RECOGNITION SMART LOCK

Soft Touch Unlock

Remote Management



# Facial recognition automatic door opening

Radar sensing, automatic wake-up without contact



170°

Wide angle camera

1.3-2.0m

Height range covered

0.35-0.9m

Face recognition distance

<2s

Face recognition speed

<0.1%

Face recognition error rate

# Advanced Appearance

Improve oxidation resistance, corrosion resistance, wear resistance, and aesthetics,





3D Face Recognition

Powered by  
**tuya**  
Intelligence  
Inside



# Lezn

**High-definition 3D face recognition with 120° ultra-wide-angle camera**  
**3.5 inches screen view**

When door-bell rings, inside can see the situation outside under the help of the camera



# 9 ADVANCED FUNCTIONS



## Tuya Wi-Fi Version

- App remote management
- Door open/close
- Family member management



Digital Door viewer



Photo Capture



Face Recognition



Fingerprint Unlock



Password Unlock



Card Unlock



Key Unlock



USB Port



## Lezn



**99% of doors are  
installed without damage**



Wooden doors



Iron doors



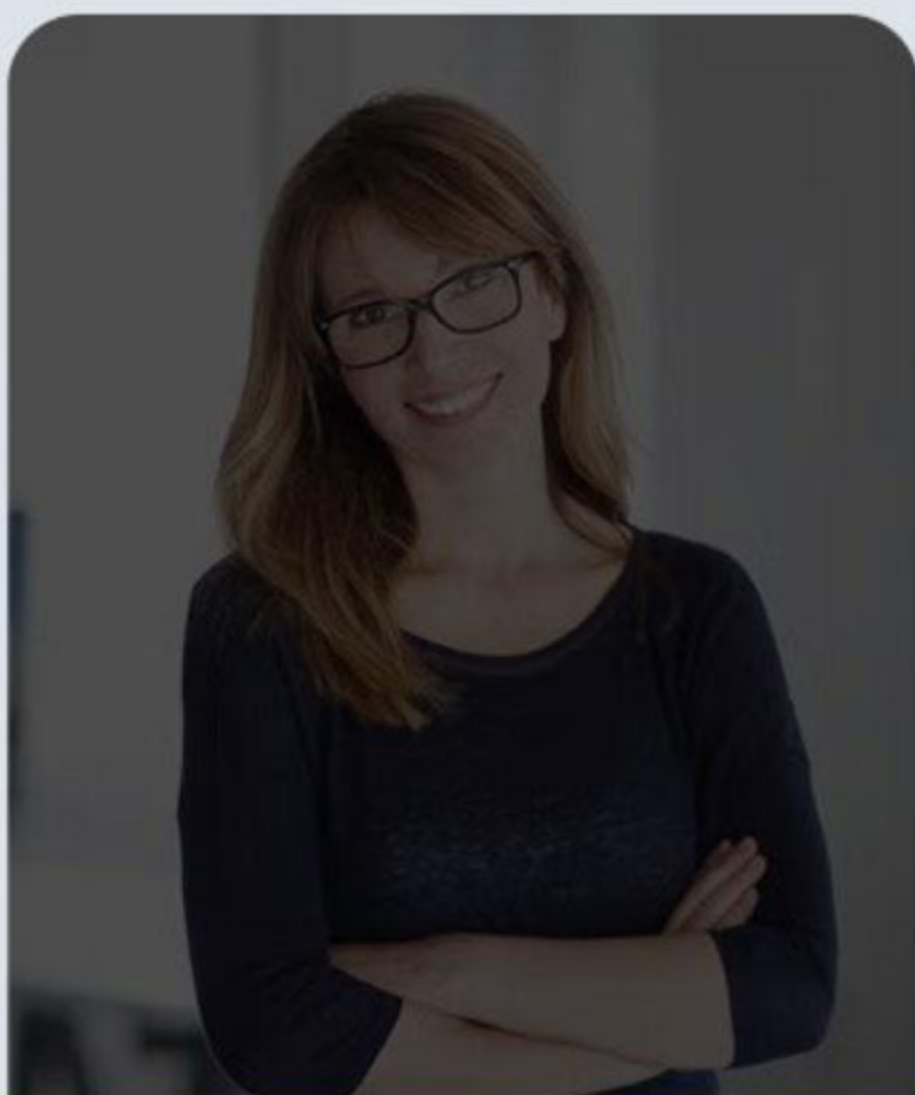
Aluminum alloy doors



# Extremely Clear Presentation of Night Vision



**Dual infrared night  
vision Peephole**



**Low light night  
vision Peephole**

## 24-hour monitoring intercom





## Multiple Reminders for Comprehensive Protection

### Anti prying alarm

If the door lock is damaged, an alarm will sound.  
Simultaneously push recorded videos to app.



### Trial and error alarm

Multiple attempts to unlock but fail to sound an alarm.  
Simultaneously push messages to the app.



### Anti Tesla coil

Built in anti Tesla coil system resistant to strong electrical interference



## Detailed data display



Manufacturer

LEZN

Model

K50

Product size

430\*65mm

Fingerprint type

FPC semiconductor

Emergency unlocking

Key/USB charge

Material

Aluminum alloy

Wake methods

Touch to wake

Touch screen materials

ABS/IML

Unlocking methods

Face/Fringerprint/password/wristband/card/remote unlock

Capacity

253 fingerprints,passwords and cards/50 faces

Doors type

Security door/iron door/wooden door

Lock cylinder material

Copper

Work temperature

-25°C~55°C

Battery capacity

4500mAh

# Why Choose LEZN?



## Sales Capability

**10+** Years Specilizing,  
**30** Overseas Sales,  
**100%** (0 Demestic Sales)



## Factory Capacity

**8** Production Assembling Lines,  
**2500** Sets Daily Capacited,  
**18000+** Square Meters Factory



## Production Assurance

**200+** Professional Teamates,  
**20+** Professional Products  
Designer & Technicians,  
**20** QC Technicians



## Partnership Protection

## Exclusive Distribution

Control to Secure  
Customer's Marketing Investment

## professional OEM & ODM services support



1.INJECTION MOLDING MACHINE



2.DIE CASTING MACHINE



3.PUNCHING MACHINE



4.WIRE CUTTING MACHINE



5.POLISHING MACHINE



6. ELECTRIC PLATING



7.SALT SPRAY TESTER



8. TENSILE TESTER



1RAW MATERIALS



2DIE CASTING



3INJECTION MOLDING



4POLISHING



5SEMI-FINISHED PRODUCTS



6ASSEMBLY



7INSPECTION



8PACKAGING



9FINISHED PRODUCTS