

Smart Secure Innovative

FINGERPRINT LOCK



Win in details



Unlocking via
fingerprint



Unlocking via
time-limited passcode



RFID Card



Unlocking via
mechanical key



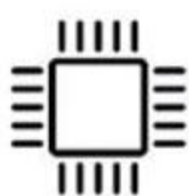
Voice prompts



Multiple alarm



Emergency power



AES Encryption



Auto locking



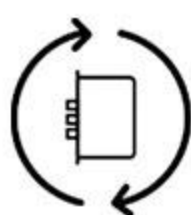
Unlocking via BLE



wifi



Electronic deadbolt lock



Autolock period



AMOLED Display



Doorbell visual
intercom



Semiconductor fingerprint recognition

Using highly sensitive
semiconductor
3D recognition technology



$\leq 0.001\%$

False acceptance rate

$\leq 0.01\%$

Rejection rate

$\leq 0.5s$

Recognition speed



Smart Card for old people or Children, More convenience



Auto lock function

Close the door, it will lock automatically

Smart DoorViewer

wide-angle | fluent | intelligence

clear | conversation

25fps

Smooth picture

1080p

HD image quality





High Definition Display

You can see the outdoor image clearly

Unlock Remotely by mobile

Visitors ring the doorbell, your mobile phone will receive request, you can touch your mobile to unlock remotely.



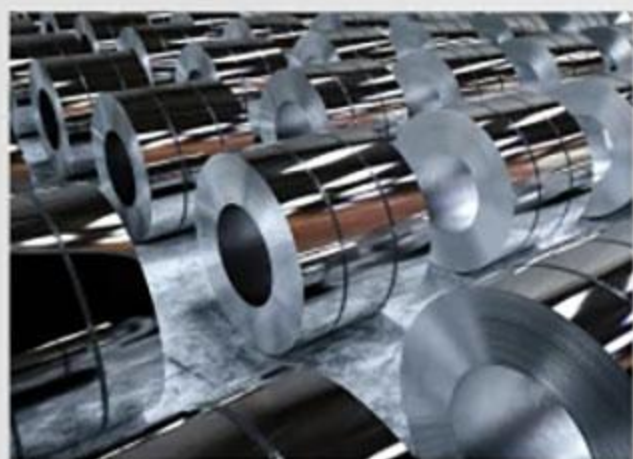
More safety technologies

Effectively prevent technology and brute force



1) Quick indoor escape handle

2) Zinc material for better strength



3) Every time open the door, the phone has a reminder and record



Powerful inner core, smart CPU

Powerful and stable operating system, high-performance chip,
more accurate running speed algorithm.



0.5s

Unlock Time

Self-optimization
Algorithm

100ms

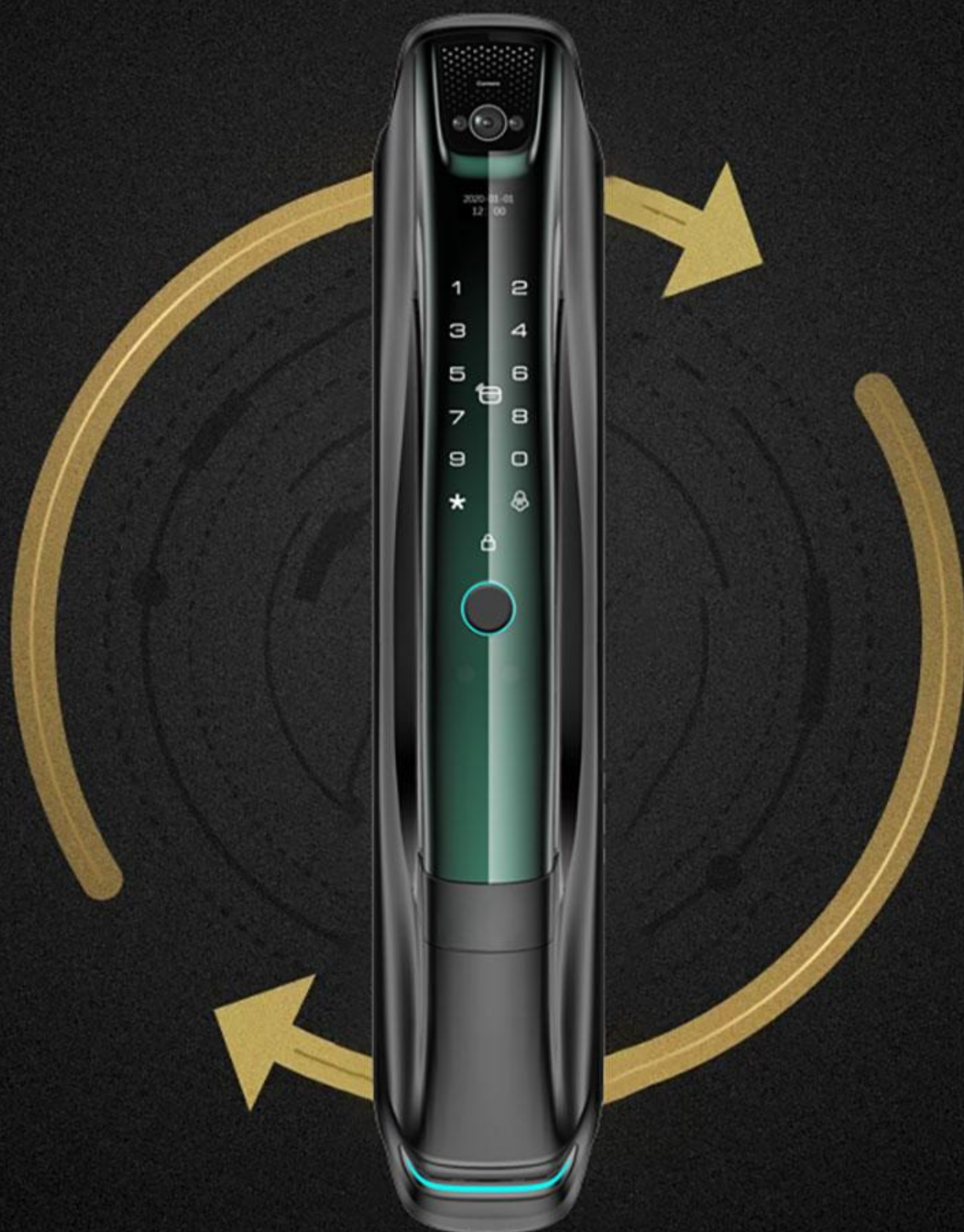
Response Time

Integrate Security and
IOT Connectivity



The locks automatically when you close door

Fully automatic, more secure



Quick response after opening the door,
firmly lock after closing the door,
enjoy a convenient life.

Product Parameters



Manufacturer

LEZN

Model

K11

Colour

Stary Grey, Gun Black

Battery capacity

4200mAh

Material

Aluminum alloy

Unlock methods

Fingerprint, app, code, card, key

Emergency charging

USB

Work temperature

-25°C~55°C

Door thickness

4~12cm

Door type

Wooden doors, iron doors,
and steel doors

Why Choose LEZN?



Sales Capability

10+ Years Specilizing,
30 Overseas Sales,
100% (0 Demestic Sales)



Factory Capacity

8 Production Assembling Lines,
2500 Sets Daily Capcited,
18000+ Square Meters Factory



Production Assurance

200+ Professional Teamates,
20+ Professional Products
Designer & Technicians,
20 QC Technicians



Partnership Protection

Exclusive Distribution

Control to Secure
Customer's Marketing Investment

professional OEM & ODM services support



1.INJECTION MOLDING MACHINE



2.DIE CASTING MACHINE



3.PUNCHING MACHINE



4.WIRE CUTTING MACHINE



5.POLISHING MACHINE



6. ELECTRIC PLATING



7.SALT SPRAY TESTER



8. TENSILE TESTER



1RAW MATERIALS



2DIE CASTING



3INJECTION MOLDING



4POLISHING



5SEMI-FINISHED PRODUCTS



6ASSEMBLY



7INSPECTION



8PACKAGING



9FINISHED PRODUCTS